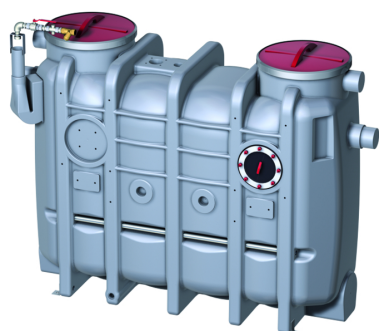


LipuJet-P-OB Basic type

Product information for the product group



ACO Product benefits

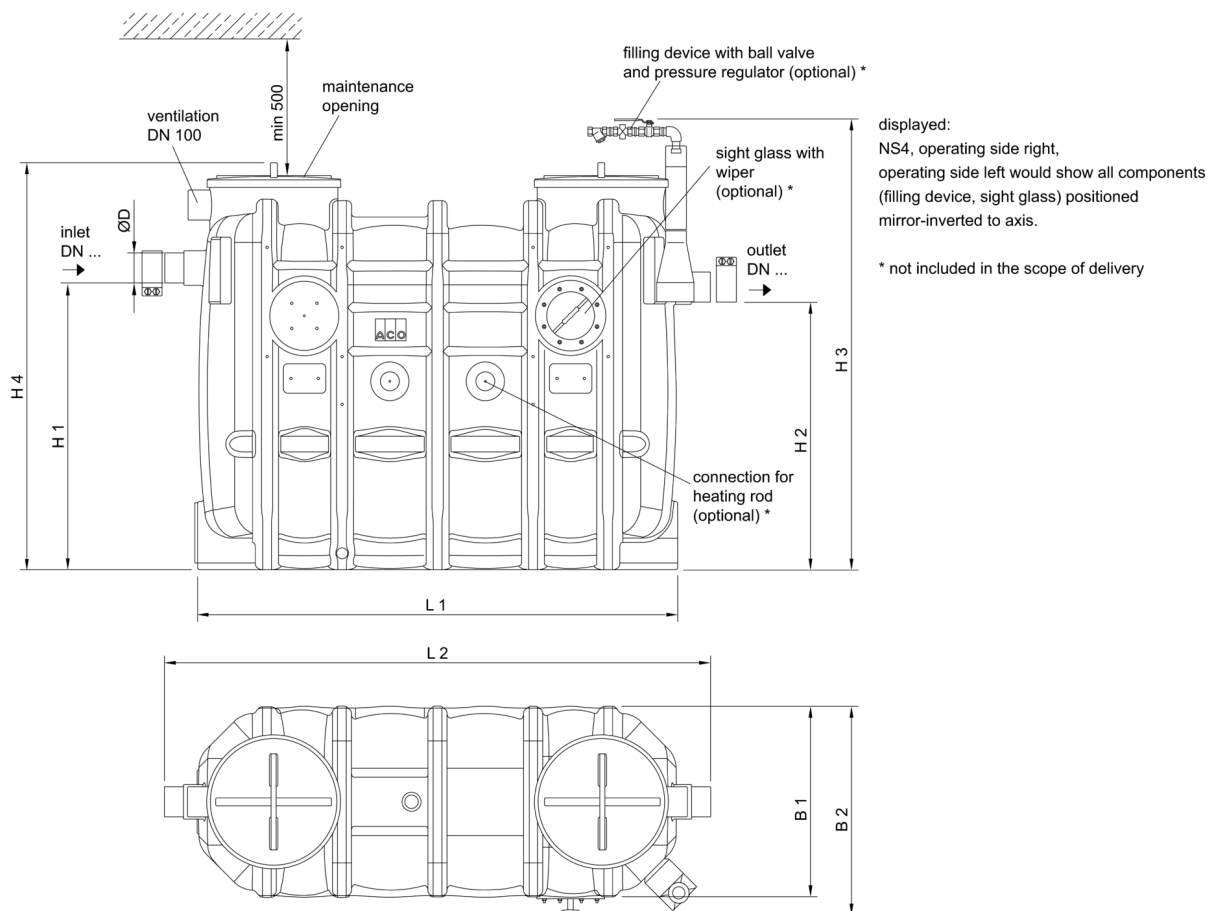
- Proven stability: 25 years
 - Upgrade to levels 1 and 3 possible
 - Minimises disposal and maintenance costs thanks to economic step increases in nominal size
 - Small delivery dimensions
 - Low weight
- Operating side: right/left
 - Suction and emptying sump with drain plug socket 1"
 - Odour-proof maintenance opening, diameter: 450 mm
 - System ACO Passavant
 - Building Supervisory Authority approval Z-54.1-414

- Grease separator plant as per DIN EN 1825 and DIN 4040-100
- For indoors installation – frost free
- With integrated sludge trap

Item Technical Data 3554.34.00

Nominal capacity	Nominal width	Contents			Weight	
		Sludge trap	Grease store	Overall	Empty	Full
		[l]	[l]	[l]	[kg]	[kg]
NS 4	DN 100	400	200	830	95	925

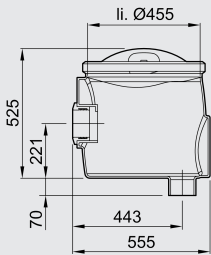
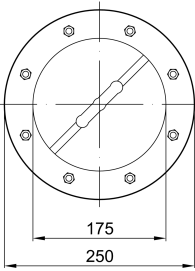
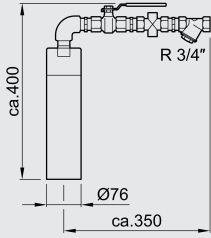
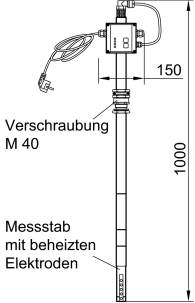
Dimensions



Nominal capacity	Dimensions								
	L1	L2	H1	H2	H3	H4	W1	W2	D
	[mm]	[mm]	[mm]	[mm]	[mm]	[mm]	[mm]	[mm]	[mm]
NS 4	1760	2000	1055	985	1680	1500	700	770	110

Accessories

	Description	Used with	Description	Item number
	Sampling pot DN 100	<ul style="list-style-type: none"> ■ Grease separator LipuJet-P/LipuSmart-P <ul style="list-style-type: none"> □ NS 1 – 4 ■ Starch separator FapuJet-P-OAP <ul style="list-style-type: none"> □ NS 0.5 – 1 	<ul style="list-style-type: none"> ■ For installation of horizontal pipes DN 100 to grease separator ■ Round shape with <ul style="list-style-type: none"> □ Coupling socket seal (material SBR) on inlet and spigot on outflow □ Odour-proof maintenance opening DN 450 ■ Weight: 10.2 kg 	3300.09.11

	Description	Used with	Description	Item number
	Sampling pot DN 100	<ul style="list-style-type: none"> ■ Grease separator LipuJet-P/LipuSmart-P <ul style="list-style-type: none"> □ NS 1 – 4 ■ Starch separator FapuJet-P-OAP <ul style="list-style-type: none"> □ NS 0.5 – 1 	<ul style="list-style-type: none"> ■ For installation in vertical pipes DN 100 going to grease separator ■ Round shape with <ul style="list-style-type: none"> □ Coupling socket seal (material SBR) on inlet and spigot on outflow □ Odour-proof maintenance opening DN 450 ■ Weight: 10.2 kg 	3300.10.11
	Viewing window	<ul style="list-style-type: none"> ■ Grease separator <ul style="list-style-type: none"> □ LipuJet-P-OB/OD/R/RD □ LipuSmart-P-OB/OD ■ BioJet-P-OM/RM (NS 2-25) 	<ul style="list-style-type: none"> ■ Nominal width: DN 200 ■ With screen wiper ■ Weight: 3.2 kg 	3300.11.10
	Filling device	<ul style="list-style-type: none"> ■ Grease separator <ul style="list-style-type: none"> □ LipuJet-P-OB/OD/R/RD □ LipuSmart-P-OB/OD ■ BioJet-P-OM/RM (NS 2-25) 	<ul style="list-style-type: none"> ■ Free outlet as per DIN 1988 Part 4 ■ For connection to drinking water supply ■ With ball valve R ¾" ■ With pressure relief valve ■ Weight: 3.5 kg 	3300.11.22
	Grease layer thickness measuring device	<ul style="list-style-type: none"> ■ LipuJet-P <ul style="list-style-type: none"> □ Oval NS 1 – 10 □ Round NS 2 – 20 ■ LipuJet-S <ul style="list-style-type: none"> □ Oval NS 1 – 10 □ Round NS 2 – 20 ■ LipuSmart-P <ul style="list-style-type: none"> □ Oval NS 1 – 10 	<ul style="list-style-type: none"> ■ For electronic measurement of layer of grease ■ Suitable for liquid and/or congealing grease ■ Measuring device with plug and used connecting cable, length: 3 m ■ With two voltage-free changeover contacts to display full warning (80 %) and advance warning of fill level (50 %) ■ With visual display of fill level ■ With heated probe rod to increase reliability of operation ■ Operating voltage: 230VAC/5 VA ■ Max consumption approx. 12 W ■ Weight: 2.8 kg 	3300.11.50

You can find further accessories under → /35543400